



# Immaculate Heart of Mary Catholic Church

Mailing Address: P. O. Box 100 \* New Melle, MO 63365

Website: [www.ihm-newmelle.org](http://www.ihm-newmelle.org)

Deliveries only address: 8 West Highway D, New Melle, MO 63365

Parish Office: 636-398-5270 Fax: 636-398-5577

## Schedule of Holy Mass

Saturday: 8:00am  
4:00pm Vigil Mass for Sunday  
Sunday: 7:30am, 9:30am, 11:30am  
Weekdays: 8:00am, St. Joseph Chapel

## Weekly Devotions and Prayers

### Eucharistic Adoration:

Monday 8:30am until Friday, 11:00am

### Rosary:

Following 8am Mass weekdays & before Sat. 4pm.

### Perpetual Help Devotions:

Tuesdays following 8am Mass

### Respect Life Prayers:

Thursday following 8am Mass

### First Saturday of the Month Devotions

8am Mass, Rosary, 15 minutes of meditation

## Sacraments

### Reconciliation:

Mon/Tue/Wed in church, 7pm  
Saturday following 8am Mass

### Marriage:

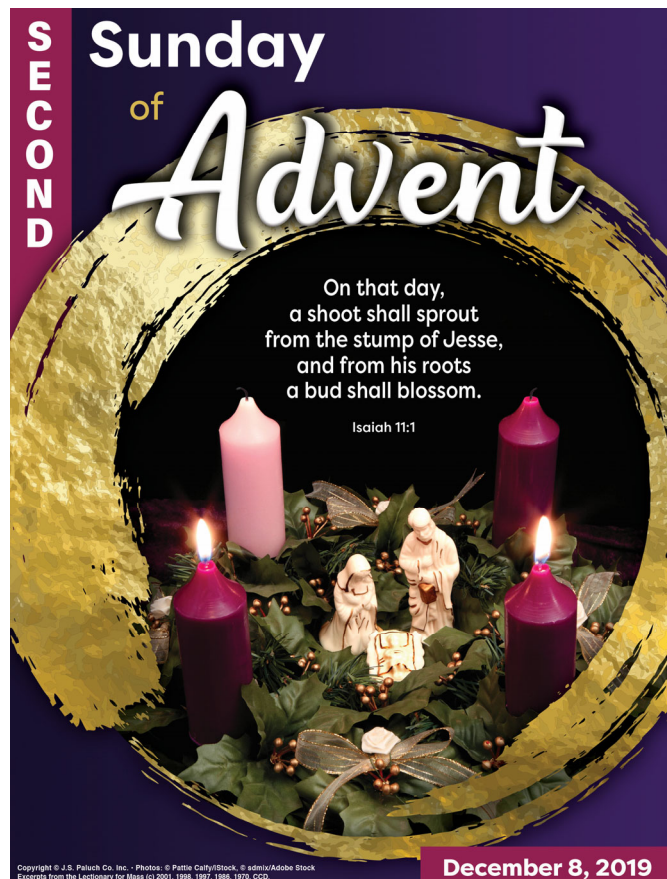
Contact the parish office  
at least six months prior to the wedding

### Baptism:

Contact the parish office  
to register for class and to arrange date

### Rite of Christian Initiation of Adults:

Contact Shawn Mueller in the parish office



## Gifts of the Spirit

The reading from the prophet Isaiah is a very hopeful description of the Messiah. Part of that description in verses 2–3 contains the traditional seven gifts of the Holy Spirit. As we prepare to celebrate the birth of the Messiah, and looking forward to his coming in glory, let us take a look at those gifts and see how we can use them.

Wisdom is first, but it is not simply a matter of tossing out proverbs and sayings. This wisdom is the gift of seeing God in creation. It means that we value the things of this world only as they help us to know and love God more. The second gift, understanding, follows from wisdom. As we appreciate God in creation, we understand what God expects of us in dealing with creation and other people. This gift

helps us know how to act in a world that seems to ignore God.

Counsel follows from understanding as the gift of making correct judgments about how to act, how to follow those commands of God. For example, understanding can lead us to love others; counsel guides us to love them in appropriate ways.

Strength, or fortitude, is the gift that enables us to do those things inspired by understanding and counsel, even if they are difficult. John the Baptist displays this gift in the Gospel when he challenges the Pharisees. Fortitude gave him the courage to die for his faith.

Knowledge is similar to counsel (knowing how to act) in that we begin to see what God wants for us in this

world. It includes an understanding of the scriptures and how God's word applies to our lives. Knowledge leads us to deeper revelations of the truths of our faith. This can lead to the sixth gift, piety (seventh in Isaiah's text—"delight in the Lord"). Piety is a willingness to worship and love God, a desire to be close to God in prayer. Piety leads us to rely totally on God and humbly ask God's help.

The final gift, fear of the Lord, is more than just being afraid. It is the awe and wonder of recognizing how great God is, how much God loves us, and how much we want to stay close to God. And the desire to be close to God circles back to the wisdom with which we see God in creation.

Tom Schmidt, Copyright © J. S. Paluch Co.

# Welcome to Immaculate Heart of Mary: *Informed—Hospitable—Missionary*

## Parish Staff

Parish Office: 636-398-5270

Fr. Tom Miller, Pastor *askpadre@aol.com*  
(for emergencies only: 314-303-2428)

Deacon Chris Ast *chrisast@archstl.org*  
Deacon Tony Falbo *tony.2011@centurylink.net*  
Laura Orf, Business Manager *lorf@ihm-newmelle.org*  
Peggy Dupree, Secretary *secretary@ihm-newmelle.org*  
Bryan Beams, Director of Music and Liturgy  
*bryanbeams@ihm-newmelle.org*  
Janet Hespen, Youth Leader *janethspn@outlook.com*  
Karen Wappelhorst, Child Safety Coordinator  
*childsafety@ihm-newmelle.org*

## Religious Education

Shawn Mueller, Director

636-398-5270, *smueller@ihm-newmelle.org*

Parish School of Religion  
Grades 1 thru 8, September thru May, 6-7:30pm, Wednesdays  
Confirmation Preparation  
8th Grade—September thru May, 6-7:30pm, Wednesdays  
Children's Liturgy of the Word  
September thru May, during the 9:30am Sunday Mass  
Adult Education  
Wednesdays at 8:45am and 6:10pm, September thru May  
Rite of Christian Initiation of Adults—contact Shawn for schedule

## Quick Contacts Directory

### Weddings, Receptions, Events

Pat Gentry, Hall Rental 636-398-5270  
Kelly Meyer, Wedding Coordinator 636-828-4994  
Jean Hitt, Wedding Coordinator 636-987-2131  
Joan Marren-Slaughter, Event Coordinator 636-398-5270  
Mary Keune, Event Coordinator 636-398-5270

### Prayer and Devotion

Eucharistic Adoration  
Shawn Mueller 636-398-5270  
Legion of Mary  
Maria Romine-Kantor 314-614-0857  
Prayer Chain  
Rita Langford 636-399-6083  
Prayer Intercession/Jonah Team  
Debbie Gillespie 636-398-4971  
Prayer Shawl Ministry  
Julia Kettler 314-616-0096

### Liturgical Ministries

Extraordinary Ministers  
Irene Caldwell 636-398-4311  
Gift Bearers  
Peggy Dupree 636-398-5270  
Lectors  
Ed Taylor 636-561-7099  
Ushers  
Gary Struckhoff 636-828-6067  
Altar Servers  
Deacon Tony Falbo *tony.2011@centurylink.net*  
Altar Society  
Pam DeBold 636-482-4765  
Music Ministry  
Bryan Beams 636-398-5270  
Contemporary Music Group  
Debbie Gillespie 636-398-4971

### Youth and Young Adults

High School Youth Leader  
Janet Hespen 314-369-6521  
Young Adults  
Julie Lassiter 636-357-0121

### Parish Organizations

Art & Environment  
Mary Karll 636-433-5049  
Budget & Finance  
Larry Graves 314-799-9804  
Cemetery Committee  
Mark Keune 314-220-7075  
Dinner Committee  
Jeff Comotto 314-570-6972  
Funeral Lunches  
Carol Grady 314-662-2281  
Ruth Neske 636-398-5699  
Vicki Grunz 636-497-5230  
Golden Hearts  
Dave London 636-398-8665  
Helping Hearts  
IHM Parish 636-398-5270  
John Grady 314-662-2138  
Mary Fischer 636-561-7747  
Bob Hutchcraft 636-346-3471  
Maria Romine-Kantor 314-614-0857  
Knights of Columbus  
Bob Hutchcraft 636-346-3471  
Marian Council  
Barb Pope 773-383-8602  
Meal Train  
Kelly Meyer *meyer5853@qmcinc.org*  
Meals on Wheels  
Jean Bammann 636-798-2718  
Outreach  
Steve Farber *sfarber@farbermarketing.com*  
Pro Life  
Bill Winters 636-828-4133  
Quilters  
Mary Ann Brakensiek 636-828-5776  
Ruth Willis 636-398-4597  
Scouting  
Chuck Hinkle 636-544-6639  
Cub Scouts: Adam McCarthy 636-634-7622  
Boy Scouts: Chad Peters 314-807-7177  
St. Vincent de Paul  
Joe Willis 636-398-2106  
Welcoming Committee  
Teresa Berfanger 636-398-5565

On that day, a shoot shall sprout  
from the stump of Jesse,  
and from his roots a bud shall blossom.

Isaiah 11:1

Copyright © J.S. Paluch Co. Inc.  
Photos: © Pattie Calfy/Stock  
© admix/Adobe Stock  
Excerpts from the Lectionary for Mass  
(c) 2001, 1988, 1987, 1986, 1979, CCD.



SECOND

# Sunday of Advent

December 8, 2019

## A History of the Advent Wreath

Dear Parishioners,

One of the prominent symbols of Advent is the wreath. Here is a brief history of it provided by Catholic Education Resource Center. There are many great resources for those willing to explore the fullness of our faith. The excerpt below is penned by the Rev. William Saunders.

The Advent wreath is part of our long-standing Catholic tradition. However, the actual origins are uncertain. There is evidence of pre-Christian Germanic peoples using wreathes with lit candles during the cold and dark December days as a sign of hope in the future warm and extended-sunlight days of Spring. In Scandinavia during Winter, lighted candles were placed around a wheel, and prayers were offered to the god of light to turn “the wheel of the earth” back toward the sun to lengthen the days and restore warmth.

By the Middle Ages, the Christians adapted this tradition and used Advent wreathes as part of their spiritual preparation for Christmas. After all, Christ is “the Light that came into the world” to dispel the darkness of sin and to radiate the truth and love of God (cf. John 3:19-21). By 1600, both Catholics and Lutherans had more formal practices surrounding the Advent wreath.

The symbolism of the Advent wreath is beautiful. The wreath is made of various evergreens, signifying continuous life. Even these evergreens have a traditional meaning which can be adapted to our faith: The laurel signifies victory over persecution and suffering; pine, holly, and yew, immortality; and cedar, strength and healing. Holly also has a special Christian symbolism: The prickly leaves remind us of the crown of thorns, and

one English legend tells of how the cross was made of holly. The circle of the wreath, which has no beginning or end, symbolizes the eternity of God, the immortality of the soul, and the everlasting life found in Christ. Any pine cones, nuts, or seedpods used to decorate the wreath also symbolize life and resurrection. All together, the wreath of evergreens depicts the immortality of our soul and the new, everlasting life promised to us through Christ, the eternal Word of the Father, who entered our world becoming true man and who was victorious over sin and death through His own passion, death, and resurrection.

The four candles represent the four weeks of Advent. A tradition is that each week represents one thousand years—the sum of the 4,000 years from Adam and Eve until the Birth of the Savior. Three candles are purple and one is rose. The purple candles in particular symbolize the prayer, penance, and preparatory sacrifices and good works undertaken at this time. The rose candle is lit on the third Sunday, Gaudete Sunday, when the priest also wears rose vestments at Mass; Gaudete Sunday is the Sunday of rejoicing, because the faithful have arrived at the midpoint of Advent, when their preparation is now half over and they are close to Christmas. The progressive lighting of the candles symbolizes the expectation and hope surrounding our Lord’s first coming into the world and the anticipation of His second coming to judge the living and the dead.

The light again signifies Christ, the Light of the world. Some modern day adaptations include a white candle placed in the middle of the wreath, which represents Christ and is lit on Christmas Eve. Another tradition is to replace the three purple and one rose candles with four white candles, which will be lit throughout Christmas season.

Blessed Advent,

*Fa. Tom*

The Giving  
Tree



Gift Angels are on the tree. Pick out one (or more) and wrap with the angel tag attached. All gifts need to be returned to church no later than December 15 (some are marked for return before that date). Thanks to everyone who will participate in this yearly effort—your generosity helps give to others the joy of the Christmas season. God bless all of you!



## This Week at Home

Heavenly Duster: Carol Ostermeyer  
Purificators: June Spiess



Sunday, December 8—2nd Sunday of Advent

Knights of Columbus Breakfast w/Santa serving 8-11am

Correction: Monday, December 9 is not a Holy Day of Obligation. Mass as usual in the chapel.

Monday, December 9

Scouts, 6:30pm

Choir practice, church, 7pm

Tuesday, December 10

Legion of Mary, Weber Hall, 9am

Fitness class, Grand Hall foyer, 9am

Children's Choir practice, church, 7pm

Marian Council Christmas Party, Grand Hall, 6pm

Wednesday, December 11

Sunday readings study, Weber Hall, 8:45am

Contemporary practice, church, 5:30pm

PSR, Founders Hall/Weber Hall/Trailer, 6pm

Bible Study, Grand Hall, 6:15pm

Praise & Worship practice, church, 7pm

Reconciliation, 7pm

Thursday, December 12

Fitness class, Grand Hall foyer, 9am

Choir practice, church, 7pm

Friday, December 13

Quilting, Weber Hall, 8:30—noon

Saturday, December 14

Reconciliation, 8:45am

Anointings after 4pm Mass

Please welcome Seminarian Bryce Weindel  
who will speak at all the Masses  
to promote the Christmas Collection

Sunday, December 15—3rd Sunday of Advent

Anointings after all Masses.

SVDP, Weber Hall, 4pm

December 15: All Giving Tree gifts to be returned

## Breakfast with Santa Sunday morning 8-11am

### Next Week Ministries

December 14—4pm

EM: Jennifer Fredrick, Donna Cuddihee, Pat Barnard,  
Becky Wilson, Carole Baker, Bob Brossette,  
Mary Hannig, Jackie Barclay

Lec: Celina Genta, Karen Wilson

Music: Bryan Beams & Cantor

GB: Judy Cova, Rita Langford

Serv: William Fredrick, Isabelle Scheer

Ush: Joe Spiess, Jerry Braden, Larry Graves,  
Tim Wilson

December 15—7:30am

EM: Bob Leeker, John Fiacco, Dianne Dickherber,  
Jan Kardasz, Emily Cooksey, Kris Jenkins

Lec: Elizabeth Vehige, Mary Hardesty

Music: Elizabeth Jaeckle & Verdi Morley

GB: Frank & Jan Kardasz

Serv: Emilia Petrik, Maybelle Hahn

Ush: Larry Smith, Ron Neske, Ron Jacob,  
Terry Schneider

December 15—9:30am

EM: Donna Hecht, Joni Marren-Slaughter,  
Chris Richter, Chris Aulbach,  
Dave & Pam DeBold, Don & Susan Hladky

Lec: Mary Simpson, Walt Hollenstein

Music: Choir

GB: Larry & Amy Molitor

Serv: Alex & Maria McCarthy, Isabelle Czuchna

Ush: Chris & Adam Molitor, Stan Kostecki,  
Bill Winters, George Stark, Joe Weber

December 15—11:30am

Volunteers for all ministries please

## IHMformation Station

December 14, 4pm Andy & Barb Pope

December 15, 7:30am Karen Wappelhorst

December 15, 9:30am Dave & Pam DeBold

December 15, 11:30am volunteers please

## 2nd Sunday of Advent - Year A

[John the Baptist began preaching,] "Turn away from your sins because the Kingdom of heaven is near!"  
MATTHEW 3:2

Years ago, a man was shocked to read his own obituary in the morning paper. His death was mistakenly reported. But what shocked him most was how the obituary described him: as someone who had devoted his life to making weapons of war. That morning he resolved to turn his energies in a new direction: working for world peace and human betterment. That man was Alfred Nobel, founder of the Nobel Peace Prize. John the Baptist's warning to us to turn from our sins and Nobel's decision to turn his energies in a new direction challenge me to inventory and reassess my own goals in life.

[Jesus said,] "Will a person gain anything if he wins the whole world but is himself lost?" LUKE 9:25  
Fr. Mark Link S.J. Action 2000

## Mass Intentions

Monday, December 9

8:00am Ed Rabbitt +  
David Lozano (11th ann.) +

Tuesday, December 10

8:00am Cy & Al Bamert  
Iris & Ben Bader +

Wednesday, December 11

8:00am All Souls  
Moira Ryan +

Thursday, December 12

8:00am Randy & Lucas Schneider +  
Dave Lauer +

Friday, December 13

8:00am the Ernst Family +

Saturday, December 14

8:00am Tom Miller +  
4:00pm Bob Burke +  
Stan Nikonowicz +

Sunday, December 15

7:30am Jolene Molitor +  
Parents of John & Karen Wappelhorst +  
9:30am People of the Parish +  
11:30am Joseph Michael Orf +

## Contributions, November 23/24

General Offertory:	\$6,239.57
Online – General Offertory:	<u>\$2,793.29</u>
<b>TOTAL</b>	<b>\$9,032.86</b>

## Contributions, Nov. 30/Dec. 1

General Offertory:	\$10,698.25
Online – General Offertory:	<u>\$3,040.41</u>
<b>TOTAL</b>	<b>\$13,738.66</b>

*"Therefore, every tree that does not bear good fruit will be cut down and thrown into the fire."  
(Matthew 3:10)*

Do you bear good fruit for Christ? Or, do you spend your time, talent, and treasure constantly acquiring more toys, clutter, and junk? Our time, our talent, and our treasure are gifts that God has given us. What we do with them is our gift back to God. What gifts are you planning to give to the Lord during this upcoming Christmas season?

*We pray ... that we realize what we do with the gifts God has given us is our gift back to God.*



## Candlelight Rorate Caeli Mass

6:45am Monday, December 16, St. Joseph Chapel

The **Rorate Caeli Mass** is a traditional Advent devotion in which a Mass in honor of the Blessed Virgin Mary for Advent is offered just before dawn, with no lighting other than candles on the altar, windowsills, and handheld. Those who attend can expect to be rewarded with a uniquely beautiful Mass.

The Mass takes its title, *Rorate Caeli* ("Drop down dew, ye heavens") from the initial Latin words of Isaiah 45:8. In the dimly lit setting, priest and faithful prepare to honor the Light of the world, Who is soon to be born, and offer praise to God for the gift of Our Lady. As the Mass proceeds and sunrise approaches, the church becomes progressively brighter, illumined by the sun as our Faith is illumined by Christ.

*We will have weekday Mass at 8am as usual.*

## Prepare Ye the Way of the Lord

ADVENT EVENTS AT  
IMMACULATE HEART OF MARY CHURCH

### Mass:

Daily 8:00am, Chapel  
Saturday 4:00pm Vigil Mass  
Sunday 7:30am, 9:30am, 11:00am

### Reconciliation:

Monday, Tuesday, Wednesday, 7-8:30pm  
Saturday after morning Mass, 8:45am

### Bible Study:

Weekly Readings Study with Shawn Mueller  
Wednesdays after daily Mass (8:45am), Weber Hall

### Anointing of the Sick:

After Masses on December 14/15

### Rorate Caeli Mass:

Monday, December 16, 6:45am, Chapel

ADORE—Adoration, Reconciliation, Praise & Worship  
Wednesday, December 18, 6:30pm

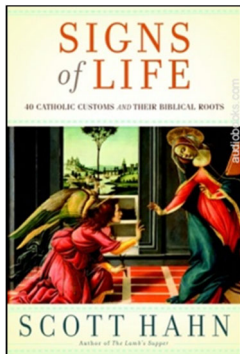
**Christmas Quilt Sales**

last date: December 7/8

## St. Paul Library / Lighthouse CD Resources

(Note: With close to 4000 items, the Parish Library is located in the Grand Hall past the restrooms. It is open during the week-normal business hours-and works on an honor system. Items from the Lighthouse CD rack are located and available in the Narthex.

### FROM THE PARISH LIBRARY (GRAND HALL)



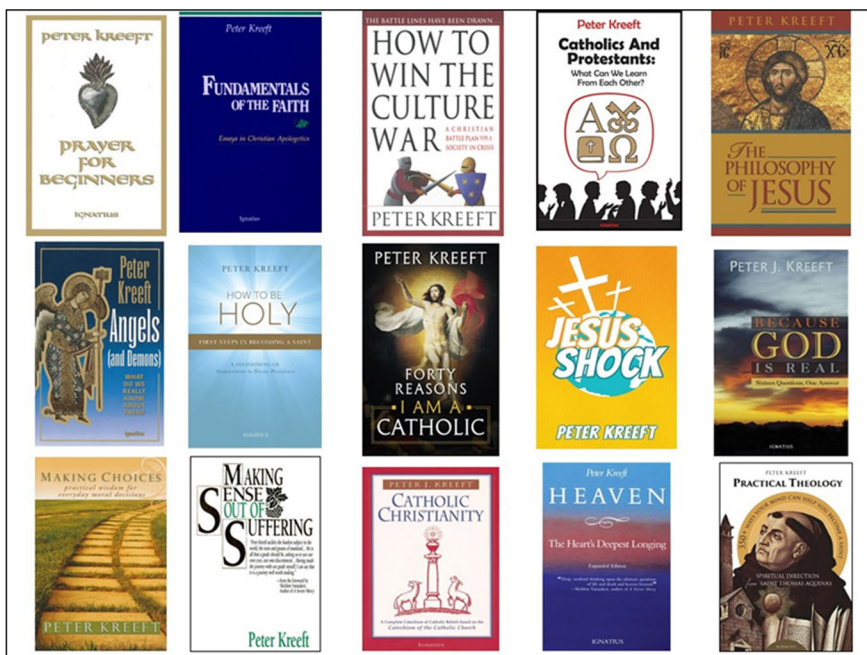
(From a review on Amazon) I don't know who would benefit most from this book: cradle Catholics who have become stagnant in their worship practices or non-Catholics seeking to understand why Catholics do what they do. No matter which group you might fit into, there's plenty of enriching information for everyone in this book. Hahn is able to take 40 of the most common Catholic traditions and explain the Biblical foundation for the practice. He also includes information from leading theologians and first-hand accounts from his own experience. As a life-long Catholic and participant in numerous Catechism classes and Bible studies, I thought I knew it all. But Hahn opened my eyes and heart to the symbols of my Faith in ways I had never considered.

The customs he discusses are: Holy Water, the Sign of the Cross, Baptism, the Mass, Guardian Angels, the Liturgical Calendar, Lent and Easter, Advent and Christmas, Novenas, posture, Morning Offering, Prayers of Aspiration, the Angelus, Grace at Meals, Examination of Conscience, Bible Study, Spiritual Reading, Retreat, Confirmation, Marriage, Priesthood, Anointing of the Sick, Incense, Candles, Sacred Images, Relics, Fasting, Confession, Indulgences, Intercession of the Saints, Pilgrimages, the Presence of God, Almsgiving, The Trinity, the Rosary, Scapulars and Medals, Mental Prayer, the Tabernacle, Preparation for Death, and Prayers for the Dead.

## Dr. Peter Kreeft, Immaculate Heart of Mary Parish and a 2020 Year of Vision

As a follow up to Dr. Kreeft's visit here and in line with the theme of 2020 as a "Year of Vision" we would like to invite members of the parish to take part in a study group, book club, faith group (whatever title works) taking a look at several of Dr. Kreeft's writings over the course of the year. We had asked him for suggestions for such groups and here is a list we have compiled. The plan is to start in January.

1. Prayer for Beginners
2. Catholics and Protestants: What Can We Learn from Each other
3. Fundamentals of the Faith
4. How to Be Holy
5. Jesus Shock
6. The Philosophy of Jesus
7. How to Win the Culture War
8. Heaven: The Heart's Deepest Longing
9. Because God is Real
10. Angels and Demons
11. Catholic Christianity
12. Making Choices
13. Forty Reasons I am Catholic
14. Practical Theology
15. How to Make Sense Out of Suffering



Would you be willing to host or be a participant of a group? We would like to get groups organized for all over the parish boundaries and also have groups meet here at Church. We can talk details once we get a list of folks interested. Some of these books can be found for free on the FORMED.org website as well. More to follow on that. In the meantime, please contact the parish office if you would be willing to be part of a group.





### Warm Clothing Collection

IHM will collect winter coats, sweaters, sweatshirts, hats, gloves, scarves or any warm clothing until December 22. Please put your new or gently used clothing donations in the container by Weber Hall. Thanks in advance for your care and consideration.

### ✝ Rest in Peace ✝

We offer our prayerful sympathy on the passing of  
**Jack Maschmeyer**  
dear friend of Ed Etzkorn  
**Kathy Reininger**  
daughter of Mary Ann Vehige  
**Frank Wolinski**  
husband of Marie Wolinski

May they and all the faithful departed  
rest in the eternal peace of Christ.

## Marian Council Christmas Celebration

\*\*\*Tickets on sale in the narthex\*\*\*

**Tuesday, December 10**

Grand Hall, doors open at 6pm

Festivities commence 6:30pm

**\$5 pay in advance, reservation deadline TODAY!!**



#### Featuring:

2 wine tickets per person  
(additional tickets \$2 each)  
50/50 raffle

Snacks, Salad & Dessert

Dinner: Cuisine by the Knights of Columbus



*In the spirit of the season, please donate a personal  
or paper product for St. Vincent de Paul*

### Needed at the Pantry



fruit juices (grape, apple, cran-something),  
sugar, saltines, vegetable soup, creamed soup  
(no tomato please), oil, tuna, canned chili,  
beef stew, baked beans, hot and cold cereal, coffee,  
peanut butter, canned fruits, tea, dish soap, paper products,  
dry pastas (all types), canned spaghetti sauce,  
men's shaving lotion, men/women disposable razors

In today's Gospel, John the Baptist urges us to "Prepare the way of the Lord." This is what Advent is all about, for we are called to help prepare the way of the Lord by making the real meaning of Christmas come alive in our own hearts, in our family and to reach out to those in need.

**Is there a family you know who needs assistance?  
Please call the Society of St. Vincent de Paul so that  
together we can help the suffering and poor to celebrate Christmas.**

**We would also like to thank everyone for your  
generous donations of 4,800 canned goods which  
were received through the Scouting for Food drive.  
We are very blessed and thankful.**

### Please pray for all the sick and suffering:

Ed Haas, Mark Hanna, Phyllis Zerr, Vickie Brink, Sandy Knott, Mike & Pat Ryan, Carol Rabbitt, Fran Bussen, Audrey Hueffmeier, Karla Sitzes, Vicky Monroe, Nancy Hollenstein, Jean Bamert, Amy Robbins, Betty Heppermann, Loretta Bruns, Cassie Potter, Kathy Feldewerth, Frank Marquart, Dan Brothers

David & Lisa Debold (Dave & Pam DeBold's children), Dave Asinger (brother-in-law of Larry & Rita Bendel), Bob Holland (friend of Shirley Augustine), Sherri Callahan (daughter of Vickie & Paul Grunz), Peter Gray (son-in-law of Adrienne Collins), Fred Brown (son-in-law of Bill & Bernie Pollihan), Leon Burkemper (son of Carol Rabbitt), Pam Knott (sister-in-law of Jerry & Sandy Knott), Doris Eisenbath (mother of Judy Molitor), Macy Enderle (niece of Ray & Kay Cherry),

**Hospitalization:** If you are hospitalized, please let us know. Please call the office or ask a friend to call for you if necessary.

**Communion Calls:** If you would like to receive Communion but are unable to get to Mass because of illness or disability, please contact the parish office: 636-398-5270.

**Prayer Requests:** Rita Langford at 636-398-4654 or email [ritalangford4@gmail.com](mailto:ritalangford4@gmail.com).

## What's Your Catholic Catechism IQ?

1. In our day, the lawful ordination of a Bishop requires a special intervention of the bishop of \_\_\_\_\_.
  - a. Jerusalem
  - b. Rome
  - c. the Basilica
  - d. Antioch
2. As Christ's \_\_\_\_\_, (representative) each bishop has the pastoral care of the particular Church entrusted to him.
  - a. point man
  - b. vicar
  - c. CEO
  - d. main man
3. The function of the bishops' ministry was handed over in a subordinate degree to priests; they are co-workers of the episcopal \_\_\_\_\_.
  - a. church
  - b. religion
  - c. order
  - d. ministry
4. Joined with the \_\_\_\_\_ order, the office of priests shares in the authority by which Christ Himself builds up and sanctifies and rules His body.
  - a. high
  - b. low
  - c. episcopal
  - d. final
5. Priests are configured to Christ the Priest in such a way that they are able to act in the \_\_\_\_\_ of Christ the Head.
  - a. person
  - b. position
  - c. posture
  - d. power
6. Priests are consecrated to preach the gospel, shepherd the faithful and to celebrate the Divine Worship as true priests of the new \_\_\_\_\_.
  - a. testament
  - b. deal
  - c. teachings
  - d. plan
7. In the \_\_\_\_\_ assembly of the faithful priests exercise in a supreme degree their sacred office.
  - a. school
  - b. college
  - c. Eucharistic
  - d. universal
8. Deacons receive the imposition of \_\_\_\_\_ not unto the priesthood, but unto the ministry.
  - a. commands
  - b. degree
  - c. hands
  - d. bishops
9. The sacrament of Holy Orders configures them to Christ, who made Himself the deacon or \_\_\_\_\_ of all.
  - a. all
  - b. slave
  - c. servant
  - d. assistant
10. It is the task of deacons to assist the bishop and priests in the celebration of the Divine Mysteries, above all the \_\_\_\_\_.
  - a. Eucharist
  - b. reading of the word
  - c. holding of the book
  - d. intercessions



### Pope's Intentions for December: The Future of the Very Young

That every country determine to take the necessary measures to make the future of the very young, especially those who suffer, a priority.

IHM's  
Youth Group  
is selling Christmas ornaments at  
the Knights of Columbus  
Breakfast with Santa this Sunday  
from 8-11am to help fund their  
Pro-Life Trip



## March For Life 2020— Registration Now Open

**MISSOURI LIFE CARAVAN** is now accepting registrations for our bus trip to the annual March for Life in Washington DC on **Thursday thru Saturday, January 23-25, 2020**. Until all life is protected, we will travel to DC to meet with our representatives and peacefully protest against the Supreme Court's decision to legalize abortion. This trip is open to anyone ages 7 and up (chaperones not provided). We depart from several locations in the St. Louis area and we do not stay in hotels as we sleep on the buses. The cost if received by December 20 is \$205, after is \$220. For more information and to register: [www.missourilifecaravan.org](http://www.missourilifecaravan.org). Contact us at 314-434-4900 or [mrl.eastern@yahoo.com](mailto:mrl.eastern@yahoo.com).

Registration deadline:  
January 2, 2020.



Marian Council is selling See's Candy as a fundraiser: \$21/lb for Milk or Dark Chocolate, Assorted Chocolate, Nuts and Chews, Toffee-ettes and 1½ pound box of peanut brittle. It's great for holiday hostess gifts, Christmas gifts, corporate gifts. Contact Jackie at 314-761-6127 to place your order, or after weekend Masses. Proceeds benefit local families' charities and the Parish.

## Readings of the Week

Mon: Gn 3:9-15, 20; Ps 98:1-4; Eph 1:3-6, 11-12; Lk 1:26-38  
Tue: Is 40:1-11; Ps 96:1-3, 10ac, 11-13; Mt 18:12-14  
Wed: Is 40:25-31; Ps 103:1-4, 8, 10; Mt 11:28-30  
Thu: Zec 2:14-17 or Rv 11:19a; 12:1-6a, 10ab;  
Jdt 13:18bcde, 19; Lk 1:26-38  
Fri: Is 48:17-19; Ps 1:1-4, 6; Mt 11:16-19  
Sat: Sir 48:1-4, 9-11; Ps 80:2ac, 3b, 15-16, 18-19; Mt 17:9a, 10-13  
Sun: Is 35:1-6a, 10; Ps 146:6-10; Jas 5:7-10; Mt 11:2-11



## A Letter from Deacon Tony

Dear Sisters and Brothers of IHM:

First of all, thank you all for your prayers, cards, concerns and well wishes. I met on Thanksgiving morning with Father Tom to fill him in on my latest health issue. We agreed that an update in the bulletin would make sense to also bring you up to speed.

At the moment I am experiencing massive nosebleeds. I have been to Urgent Care walk-ins and hospital ER's to address the issue. They finally packed my nose, but the cause seems to be the latest meds prescribed by my doctor. I am walking around with a towel for various reasons, including any further nosebleed incidents.

Until the cause is identified and adjusted, I cannot return. I told Father that I expect it will be another two to three weeks. Until then please continue to pray for me. You are all in my prayers daily.

Thanks for your concerns.

Deacon Tony

## Advent Reflection 2019

"The Word Was Made Flesh and Dwelt Among us" highlights the meaning and significance for each of us of the Incarnation, the reality of the Word of God being made flesh in the Virgin Mary's womb and living among us. "Put flesh upon the reality" of our union with one another in the Body of Christ through participation in this free Advent reflection, held at:

All Saints Church Annex—310 Cardinal Place, St. Peters, MO

Sunday, December 15, 5:00pm (for info call 636-397-1440)

A meal will be provided, a conference, and an opportunity to participate in an outreach offering to our local sisters and brothers in need.



Janet Hespen, Youth Minister, 314-369-6521

### CALENDAR

- Dec. 19: Youth Group Christmas Party 5:30pm and later to Fort Zumwalt Park to see the Christmas lights. RSVP to Janet by 12/10.
- Dec. 25: Merry Christmas! Happy Birthday Jesus! Everyone enjoy your loved ones@
- Jan. 2: Youth Group meeting 6:30pm in the Grand Hall. Luke 18 planning info. New beginnings theme.

### Formed & PSR Corner

December is traditionally and devotionally dedicated to the Immaculate Conception. The first 24 days of December fall during the liturgical season known as of Advent and are represented by the liturgical color purple. The remaining days of December mark the beginning of the Christmas season. The liturgical color changes to white or gold — a symbol of joy, purity and innocence. How will your family celebrate advent?



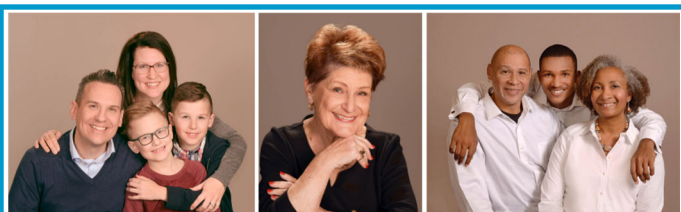
Hand-made Rosaries and Rosary Repair:  
Mary Karll: 314-550-4351

### ALL COLLEGE STUDENTS and YOUNG ADULTS

are invited to UMSL's Catholic Newman Center, which offers a warm and welcoming place to study, relax, pray, play and hang out. We have student-centered evening Masses (including Sunday evenings at 6pm on the south campus), socials, faith sharing groups, service and leadership opportunities, and spiritual direction. Contact [cncumsl.org](http://cncumsl.org) or [frnick@cncumsl.org](mailto:frnick@cncumsl.org).



Thank you, St. Jude, for your intercession. May the Sacred Heart of Jesus be adored, glorified, loved and preserved throughout the world, now and forever. Sacred Heart of Jesus, have mercy on us. St. Jude, Worker of Miracles, pray for us. St. Jude, Help of the Hopeless, pray for us.



## Save the date

Be included in the new  
Immaculate Heart of Mary Church directory.

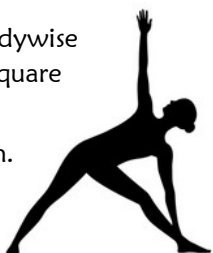
Photography dates: February 18—22  
February 26-29

**Lifetouch**

**Yoga at IHM** has moved to Bodywise  
Pilates at 30 W. Hwy. D in the Town Square  
building.

Classes are Wednesday evenings at 7pm.

Look for some additional classes in the  
new year!



- |                   |                     |
|-------------------|---------------------|
| 1. Rome 1559      | 5. person 1563      |
| 2. vicar 1560     | 4. episcopal 562    |
| 3. order 1562     | 3. hands 1569       |
| 6. testament 1564 | 7. Eucharistic 1566 |
|                   | 8. hands 1569       |
|                   | 9. servant 1570     |
|                   | 10. Eucharist 1570  |

## Catholic IQ Answers



## Prayer Warriors for Priests

Prayer Warriors for Priests is a group of women  
that meets monthly to pray for priests, deacons,  
and seminarians of the St. Charles Deanery and  
surrounding areas.

All women are invited to join us for the Rosary.  
Any questions, please contact Mary Stassi: 636-  
357-1387 or pinegrovefarm76@yahoo.com.  
Here is the prayer schedule for the next few  
months, all **beginning at 10am**:

December 14: ICD—Adoration Chapel

**NAR-ANON SUPPORT GROUP:** Weekly meetings on  
Saturdays, 10:00 am in the Trailer at IHM.

**EWTN CATHOLIC RADIO—AM 1460**  
*Informative Catholic programming.*



**Have you or someone you've known been touched  
by adoption?** Adoption, even through non profit agen-  
cies, can be very expensive. The Archbishop Robert J.  
Carlson Adoption Fun was created to help build families  
through this loving choice. There are two ways you can  
help—buy a raffle ticket for yourself or as a gift for 10  
seats at a 2020 Cardinals Game in Suite 33:

[bit.ly/adoptiongranaffle](http://bit.ly/adoptiongranaffle)

or just make a donation at

<https://giving.archstl.org/Product/office-of-natural-family-planning-archbishop-robert-s-carlson-adoption-fund>

Help build families this Season of Our Savior's Birth. For  
more information, contact [melissabarnason@archstl.org](mailto:melissabarnason@archstl.org).

**Invitation to Surviving Divorce . . .** The holidays can  
be difficult for divorced and separated families. Make  
your healing a priority in the new year by attending **Sur-  
viving Divorce**. The 12-week program follows lay men  
and women on the journey to true healing, along with  
Catholic experts who address denial, anger, grief, guilt,  
forgiveness, money, the kids, the ex-spouse, spirituality,  
annulment and much more. Immaculate Conception/  
Dardenne is hosting the program beginning January 8.  
There is a \$25 fee which will cover all materials needed.  
(*Scholarships are available for anyone*). Contact Debi at  
[debijo@att.net](mailto:debijo@att.net).

**Volunteers needed** to pack and transport donated do-  
nuts from Heaven Scent Bakery in O'Fallon to a charita-  
ble/non-profit organization on Friday mornings either  
weekly or monthly. If interested or for more info call  
Trish at 636-332-6676.



A great way to organize emergency meals for the people  
of our parish!

Arrival of a new baby	Injuries/Surgeries
Military deployment	Extended illnesses
Condolences	Group events

Please contact Kelly Meyer at [meyer5853@qmcinc.org](mailto:meyer5853@qmcinc.org) if  
you have any questions or would like to become a part  
of this ministry.

Paper and clothes recycling bins are located  
on the gravel lot behind Fr. Tom's house.



#### WHY IS IT

A man wakes up after sleeping under an ADVERTISED blanket on an ADVERTISED mattress and pulls off ADVERTISED pajamas bathes in an ADVERTISED shower shaves with an ADVERTISED razor brushes his teeth with ADVERTISED toothpaste washes with ADVERTISED soap puts on ADVERTISED clothes drinks a cup of ADVERTISED coffee drives to work in an ADVERTISED car and then . . . . refuses to ADVERTISE believing it doesn't pay. Later if business is poor he ADVERTISES it for sale.

**WHY IS IT?**

**Walt Smith's**

**Flooring Company**

Carpet • Vinyl • Wood  
Laminates • Ceramic  
"Serving the Area Over 40 Years!"

Assumption Parishioner Walt Smith  
636-272-2313  
Cell 636-866-4588

**blondin**

Professional Real Estate  
New Melle Town Square Ste 106  
636.398.5770  
[www.BlondinGroup.com](http://www.BlondinGroup.com)

#### Need Health Insurance?

**Call Dan or Stella Wolf**  
parishioners



Groups 2+  
Individual  
**MEDICARE PLANS**

All Major Companies Represented  
314-721-0358 636-887-2441

#### Say Good-bye to Clogged Gutters!



Call today for your FREE estimate and in-home demonstration

**CALL NOW 314-549-8449**

#### Receive a \$25 Lowe's Gift Card with FREE in-home estimate!

All participants who attend an estimated 60-90 minute in-home product consultation will receive a \$25 gift card. Retail value is \$25. Offer sponsored by LeafGuard Holdings Inc. Limit one per household. Company processes, sells, and installs seamless gutter protection. This offer is valid for homeowners over 18 years of age. If married or involved with a life partner, both establishing persons must attend and complete presentation together. Participants must have a photo ID, be able to understand English, and be legally able to enter into a contract. The following persons are not eligible for this offer: employees of Company or affiliated companies or entities, their immediate family members, previous participants in a Company in-home consultation within the past 12 months and all current and former Company customers. Gift may not be extended, transferred, or substituted except that Company may substitute a gift of equal or greater value if it deems it necessary. Gift card will be mailed to the participant in first class United States Mail within 21 days of receipt of the promotion form. Not valid in conjunction with any other promotion or discount of any kind. Offer not sponsored or promoted by Lowe's and is subject to change without notice prior to expiration. Expires 3/31/20.

\*Guaranteed not to clog for as long as you own your home, or we'll clean your gutters for free.



LeafGuard® is **guaranteed never to clog** or we'll clean it for **FREE**!

- Seamless, one-piece system keeps out leaves, pine needles, and debris
- Eliminates the risk of falling off a ladder to clean clogged gutters
- Durable, all-weather tested system not a flimsy attachment

**ENGLERT LeafGuard**  
Get it. And forget it.®



#### Get this weekly bulletin delivered by email - for FREE!

Sign up here:

**<https://www.jspaluch.com/BulletinSubscribe.aspx>**

Courtesy of J.S. Paluch Company, Inc.



Protecting **Seniors**  
Nationwide



Medical Alert System



**\$29.95/Mo.** billed quarterly

- One Free Month
- No Long-Term Contract
- Price Guarantee
- Easy Self Installation

Call Today! Toll Free 1.877.801.8608

#### Standing on the Rock CD by James Wahl

**FUN AND FAITH-FILLED MUSIC**

for little ones, with 10 songs based on Bible stories and the teachings of Jesus.

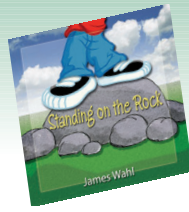
This is a new music collection for preschool children and those who are in early grade school.

\$17.00 + S&H



**WORLD LIBRARY PUBLICATIONS**  
the music and liturgy division of J.S. Paluch Company, Inc.

800-566-6150 • [www.wlp.jspaluch.com/14028.htm](http://www.wlp.jspaluch.com/14028.htm)



**FINDaPARISH.com**

Check It Out Today!

**The Most Complete**  
**Online National**  
**Directory of**  
**Catholic Parishes**

**Short top's**

30 West Highway D, New Melle • 398-4945



#### If You Live Alone You Need MDMedAlert!

24 Hour Protection at **HOME** and **AWAY!**

- ✓ Ambulance Solutions as Low as **\$19.95** a month
- ✓ Police ✓ Fire
- ✓ Friends/Family **FREE Shipping**
- FREE Activation**
- NO Long Term Contracts**



**CALL NOW! 800.809.3352**

**MDMedAlert**  
Safe-Guarding America's Seniors Nationwide!



**GPS Tracking w/Fall Detection**  
Nationwide, No Land Line Needed  
**EASY Set-up, NO Contract**  
24/7 365 Monitoring in the USA

#### Saint Margaret Sunday Missal

An ideal companion for personal prayer.

In Stock & Ready to Order Today.  
**CALL OR ORDER ONLINE. \$39.95**



800-566-6150 • [www.wlpmusic.com](http://www.wlpmusic.com)

**Life Matters**

For more information go to  
[www.usccb.org/respectlife](http://www.usccb.org/respectlife)



**Beseda Flooring & More**  
Your One Stop Floor Shop  
Since 1985

5773 Westwood Dr. • Weldon Springs

**636.926.9989**

[www.BesedaFlooring.com](http://www.BesedaFlooring.com)



#### NEW MELLE AUTOMOTIVE

ERIC & JAN

ASE CERTIFIED 636-828-5426  
23 HWY D  
NEW MELLE, MO 63365

IF YOU CARE ENOUGH,  
YOU WILL BOARD WITH US  
 **Sorenson Kennels**  
1073 HWY DD  
DEFIANCE, MO 63341  
TOM SORENSON  
(636) 828-5149

Catholic Cruises and Tours and The Apostleship of the Sea of the United States of America  
**Take your FAITH ON A JOURNEY.**  
Call us today at 860-399-1785 or email [eileen@CatholicCruisesandTours.com](mailto:eileen@CatholicCruisesandTours.com)  
[www.CatholicCruisesandTours.com](http://www.CatholicCruisesandTours.com)



**Consider Remembering Your Parish in Your Will.**  
For further information, please call the Parish Office.

**catholicmatch®**  
Missouri



[CatholicMatch.com/myMO](http://CatholicMatch.com/myMO)



**KRILOGY Financial Advisor**  
**Hanh D. Nguyen**  
 Financial Management • Retirement Planning  
 Education Funding  
**KRILOGY.COM 636-489-2829**  
Investment Advisory Services offered through Kriology Financial, an SEC Registered Investment Advisor. Please review all prospectuses and Kriology Financial's Form ADV 2A carefully prior to investing. Services and products offered through Kriology Financial are not insured and may lose value.

**Blue Flame Gas Company**  
 Bulk or Bottle Gas  
 Appliances: Sales & Service  
 15956 State Highway 47 • 433-2248  
 Dennis Glosemeyer

**New Melle Dental**  
 ALWAYS ACCEPTING  
 NEW PATIENTS  
 E.P. MOORE III, D.D.S.  
**636-828-4511**  
 WWW.NEWMELLEDDENTAL.COM

**HOFF HEATING & A/C**  
 SALES & SERVICE  
 FREE ESTIMATES  
**240-4633**  
 www.hoffheating.com

**NATIONAL CATHOLIC REGISTER**  
 www.ncregister.com

**State Farm**  
**Kathy Kilo Peterson, Agent**  
 w 636.561.6460 • c 636.734.5557  
 www.kkilo.com

**STRAATMANN FEED**  
 Farm, Lawn & Pet  
 Labadie, MO — New Melle, MO  
 www.straatmannfeed.com

**DAVEY**  
 Proven Solutions for a Growing World  
**\$20 OFF**  
 Tree Pruning / Removal / Fertilization  
 314-782-5328 | davey.com

**Karrenbrock Construction & Excavating**  
 Family Owned & Operated  
 Call Us For All Your Concrete, Excavating & Site Utility Needs!  
**636.828.5420 New Melle**  
 office@karrenbrockconst.com

**BERKSHIRE HATHAWAY | Select Properties HomeServices**  
**CINDY DETERS**  
 REALTOR®  
 Marketing Specialist  
**636.219.5693**  
 www.cindydeters.com  
 ceters@bhhsselectstl.com

**Gerard Nieters, Attorney at Law**  
 ICD Parishioner  
 Wills • Trusts • Estates • Probate  
 Real Estate • Civil Litigation  
**314-368-8460**

**Teresa Waddington**  
 Sales Representative  
**314.440.7475**  
 tcwaddington.96@gmail.com

**State Farm**  
**Sandy L Kessler Ins Agcy Inc**  
 Sandy Kessler, Agent  
 1293 Bryan Road  
 O'Fallon, MO 63366  
 Bus: 636-474-0700  
 sandykessler.com

**Your ad could be in this space!**

**The Greenwood Group**  
 Complete Landscape Management  
**636-398-8800**  
 www.thegreenwoodgroup.net

**UnitedHealthcare**  
 A new leader in Senior Health.  
 AbbeySeniorHealth.com

**Abbey Senior Health**

**Free In-home Estimates**  
 We bring the Samples to you  
**Jacobs Floors, Inc.**  
 • Commercial • Residential  
 Sales and Installation  
 • Carpet • Vinyl • Wood  
 • Pergo/Laminates  
 • Ceramic • Marble  
 • All Types of Flooring Repairs and  
 Carpet Restretching  
 • Custom Area Rugs  
 Jim Jacobs - President  
 636-398-4741  
 Cell: 314-550-1462 • Fax 636-398-4841  
 jacobsfloors@aol.com  
 www.jacobsfloors.com  
 4112 Hwy. Z., Wentzville, MO 63385  
 Showroom By Appointment Only Closed Sundays  
**MANNINGTON**

**ALL ABOUT Blinds**  
 Drapery • Blinds • Interior Shutters  
 Call for a Design Consultation!  
**636-939-6700**  
 Visit Our Beautiful  
 Showroom in O'Fallon!  
 HunterDouglas  
 Gallery  
 1120 Technology Drive, Suite 106

**Please Patronize**  
 The Sponsors Who Appear On This Bulletin. It Is Through  
 Their Support That This Bulletin Is Made Possible.  
 Business Owners Interested In Advertising Please Call  
**J.S. Paluch**  
**1-855-685-5703**

**Thank You**  
 Thank you for advertising in  
 our church bulletin.  
 I am patronizing your business  
 because of it!

**Thank You**  
 Thank you for advertising in  
 our church bulletin.  
 I am patronizing your business  
 because of it!

**TERMINIX**  
**Termite & Pest Control**  
 Free Inspection  
**947-1452 281-4020**  
 Todd and Tim Pickering  
 Rick Wilkins

**ONE PARISH**  
 Download Our Free App or Visit  
**MY.ONEPARISH.COM**

**Indoor Comfort Specialists**  
**Elite**  
 Heating and Air Conditioning  
**636-887-0971**  
 http://elitecomfortexperts.com

**DOUBLE MARKET**  
 Your Neighborhood Market  
**1300 Highway DD**  
**Defiance, MO 63341**  
**636-828-5165**

**ON THE GO HAULING**  
**Roll-Off Dumpsters**  
 10 yd • 15 yd • 20 yd • 30 yd • 40 yd  
 Family Owned and Operated  
**Terry Schneider**  
**(636) 828-5929**  
 www.OnTheGoTrashHauling.com

**ONE PARISH**  
 Download Our Free App or Visit  
**MY.ONEPARISH.COM**

**Invest Locally**  
 Targeting local business makes good "Cents"—  
 Get your name out there by advertising in local  
 parish bulletins. Contact us today for your next  
 advertising move and we will work with you for  
 your next **"AD THAT WORKS!"**  
 Check us out at **www.jspaluch.com**

**ON THE GO HAULING**  
**Roll-Off Dumpsters**  
 10 yd • 15 yd • 20 yd • 30 yd • 40 yd  
 Family Owned and Operated  
**Terry Schneider**  
**(636) 828-5929**  
 www.OnTheGoTrashHauling.com

**ON THE GO HAULING**  
**Roll-Off Dumpsters**  
 10 yd • 15 yd • 20 yd • 30 yd • 40 yd  
 Family Owned and Operated  
**Terry Schneider**  
**(636) 828-5929**  
 www.OnTheGoTrashHauling.com

**CATHOLIC SUPPLY®**  
 OF ST. LOUIS, INC.  
**RELIGIOUS GIFTS & DECOR | SCHOOL UNIFORMS | BOOKS & BIBLES**  
**STATUARY | NATIVITIES | CHURCH SUPPLIES | CANDLES**  
**SEASONAL & SACRAMENTAL GIFTS**  
**ST. LOUIS HILLS**  
 6759 Chippewa Street  
 (at Jamieson, across from Ted Drewes)  
 St. Louis, MO 63109  
 (314) 644-0643  
**SHOP ONLINE! catholicsupply.com**  
**O'FALLON, MO**  
 2953 Hwy K  
 (at Hwy N, between Dierbergs and Sears)  
 O'Fallon, MO 63368  
 (636) 379-3705

**Invest Locally**  
 Targeting local business makes good "Cents"—  
 Get your name out there by advertising in local  
 parish bulletins. Contact us today for your next  
 advertising move and we will work with you for  
 your next **"AD THAT WORKS!"**  
 Check us out at **www.jspaluch.com**

**ON THE GO HAULING**  
**Roll-Off Dumpsters**  
 10 yd • 15 yd • 20 yd • 30 yd • 40 yd  
 Family Owned and Operated  
**Terry Schneider**  
**(636) 828-5929**  
 www.OnTheGoTrashHauling.com

**ON THE GO HAULING**  
**Roll-Off Dumpsters**  
 10 yd • 15 yd • 20 yd • 30 yd • 40 yd  
 Family Owned and Operated  
**Terry Schneider**  
**(636) 828-5929**  
 www.OnTheGoTrashHauling.com